

Correction to “Prostaglandin receptor EP₄ mediates the bone anabolic effects of PGE₂”

In the above article [Machwate M, Harada S, Leu CT, Seedor G, Labelle M, Gallant M, Hutchins S, Lachance N, Sawyer N, Slipetz D, Metters KM, Rodan SB, Young R, Rodan GA (2001) *Mol Pharmacol* **60**:36–41], the structure depicted in Fig. 1A was incorrect. The corrected structure appears below.

The authors regret this error and apologize for any confusion or inconvenience it may have caused.

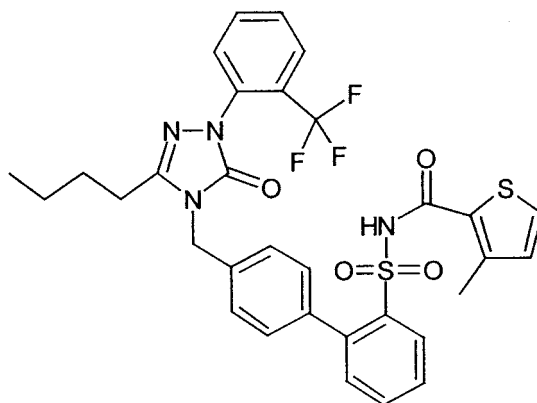


Fig. 1. Chemical structure of EP₄A.